

COVID-19 Resilience Package

\$11 billion to support our continued fight against the pandemic



Public Health and Safe Re-Opening

- **\$4.8 billion** for public health and safe re-opening measures
 - Free and voluntary vaccinations for our people
 - Contact tracing and testing



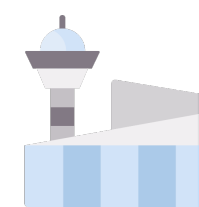
Support for Workers and Businesses

- **Extension of Jobs Support Scheme**
 - **Tier 1** sectors (i.e. aviation, aerospace, tourism): **30% support** for Apr to Jun '21 wages, followed by **10% support** for Jul to Sep '21 wages
 - **Tier 2** sectors (e.g. retail, arts and culture, food services, built environment): **10% support** for Apr to Jun '21 wages
- **Continuation** of first tranche of **SGUnited Jobs and Skills Package** into FY21
- Continued credit access via **Temporary Bridging Loan Programme** and enhanced **Enterprise Financing Scheme – Trade Loan** till 30 Sep '21
- **COVID-19 Recovery Grant** to help workers and self-employed persons
 - Up to **\$700** per month for 3 months for employees who have lost their jobs or are placed on involuntary no-pay leave for at least 3 consecutive months
 - Up to **\$500** per month for 3 months for employees and self-employed persons who are facing income loss



Support for Specific Sectors

- **\$870 million** for the **aviation sector**, to preserve core capabilities and extend cost relief
- **COVID-19 Driver Relief Fund** for eligible taxi and private hire car drivers
 - **\$600** per vehicle per month from Jan to Mar '21, and **\$450** per vehicle per month from Apr to Jun '21
- **\$45 million** extension of the **Arts & Culture Resilience Package** and **Sports Resilience Package** to support businesses and self-employed persons in these sectors



Jobs Growth Incentive (JGI)

Additional **\$5.2 billion** to support employers to accelerate hiring of local workers



For all new local hires

1 Extend qualifying window for new local hires by 7 months

Qualifying window:



Eligibility: Employers must increase both their local workforce and number of local workers earning at least \$1,400 a month*

* Baseline and JGI adjustment factor for employers that hire new locals from Mar '21 to Sep '21 will be reset to Feb '21 (from Aug '20)

With 25% of wage support for up to 12 months, eligible employers can continue to receive up to \$15,000 per non-mature hire

For all mature local hires (aged 40 and above), persons with disabilities, and ex-offenders

2 Extend duration of wage support by up to 6 months

Up to 18 months of wage support from month of hire, from up to 12 months



Also applies to employers that are already receiving JGI for workers hired from Sep '20 to Feb '21

3 Increase supportable gross monthly wage cap to first \$6,000, up from \$5,000

Eligible employers that hire such workers from Sep '20 to Feb '21 will benefit from the increased gross monthly wage cap for wages paid from Mar '21 onwards



With 50% of wage support for up to 18 months, eligible employers that hire such workers can receive up to \$54,000 per hire

Household Support Package

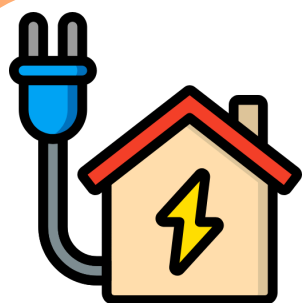


\$900 million to provide additional support for families during this period of economic uncertainty



GST Voucher – Cash Special Payment

- Lower-income Singaporeans who qualify for the GST Voucher - Cash will receive an **additional Special Payment of \$200** each in Jun '21



GST Voucher – U-Save Special Payment

- All eligible HDB households will receive an **additional 50% of their regular GST Voucher - U-Save** over one year, or between \$120 and \$200 of utilities rebates, in Apr '21 and Jul '21



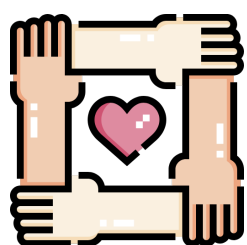
Service and Conservancy Charges Rebate

- Eligible Singaporean households living in HDB flats will receive rebates to **offset between 1.5 and 3.5 months** of Service and Conservancy Charges over one year, disbursed in Apr '21, Jul '21, Oct '21, and Jan '22



Top-ups to Child Development Account, Edusave Account, and Post-Secondary Education Account

- Singaporean children below age 21 in 2021 will receive an additional **one-off top-up of \$200**
- Top-ups to Edusave Account and Post-Secondary Education Account in May '21; top-up to Child Development Account in Sep '21



Community Development Council (CDC) Vouchers

- \$100** in vouchers for each Singaporean household, to be used at participating heartland shops and hawker centres

Singapore Green Plan 2030



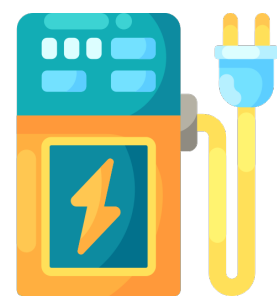
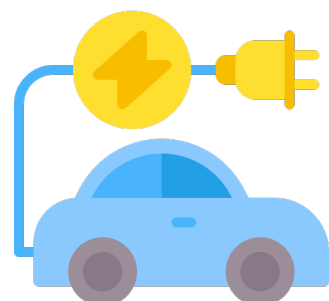
To secure a green, liveable, and sustainable home for generations of Singaporeans to come

Food Resilience



- **\$60 million Agri-Food Cluster Transformation Fund** to continue supporting technology adoption in the agri-food sector

Encouraging Electric Vehicle (EV) Adoption



- **60,000 EV charging points** at public carparks and private premises by 2030
- **\$30 million over the next 5 years** for EV-related initiatives
- **Increasing affordability of electric cars** by narrowing the cost differential between electric cars and internal combustion engine (ICE) cars
 - **Lower Additional Registration Fee floor** from \$5,000 to \$0 for electric cars from Jan '22 to Dec '23
 - **Adjust road tax for electric cars** so that mass-market electric cars pay road tax comparable to ICE cars

Green Financing



- **Green bonds** for select public infrastructure projects
 - Deepen market liquidity for green bonds
 - Attract green issuers, capital, and investors to our financial centre
 - Up to **\$19 billion** of public sector green projects as a start